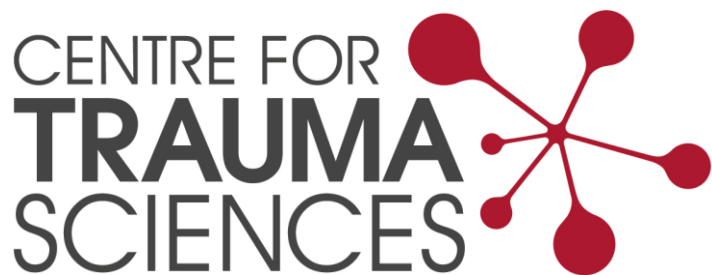


RESUSCITATIVE THORACOTOMY & REBOA: ARE THEY WORTH IT?

KARIM BROHI, FRCS FRCA

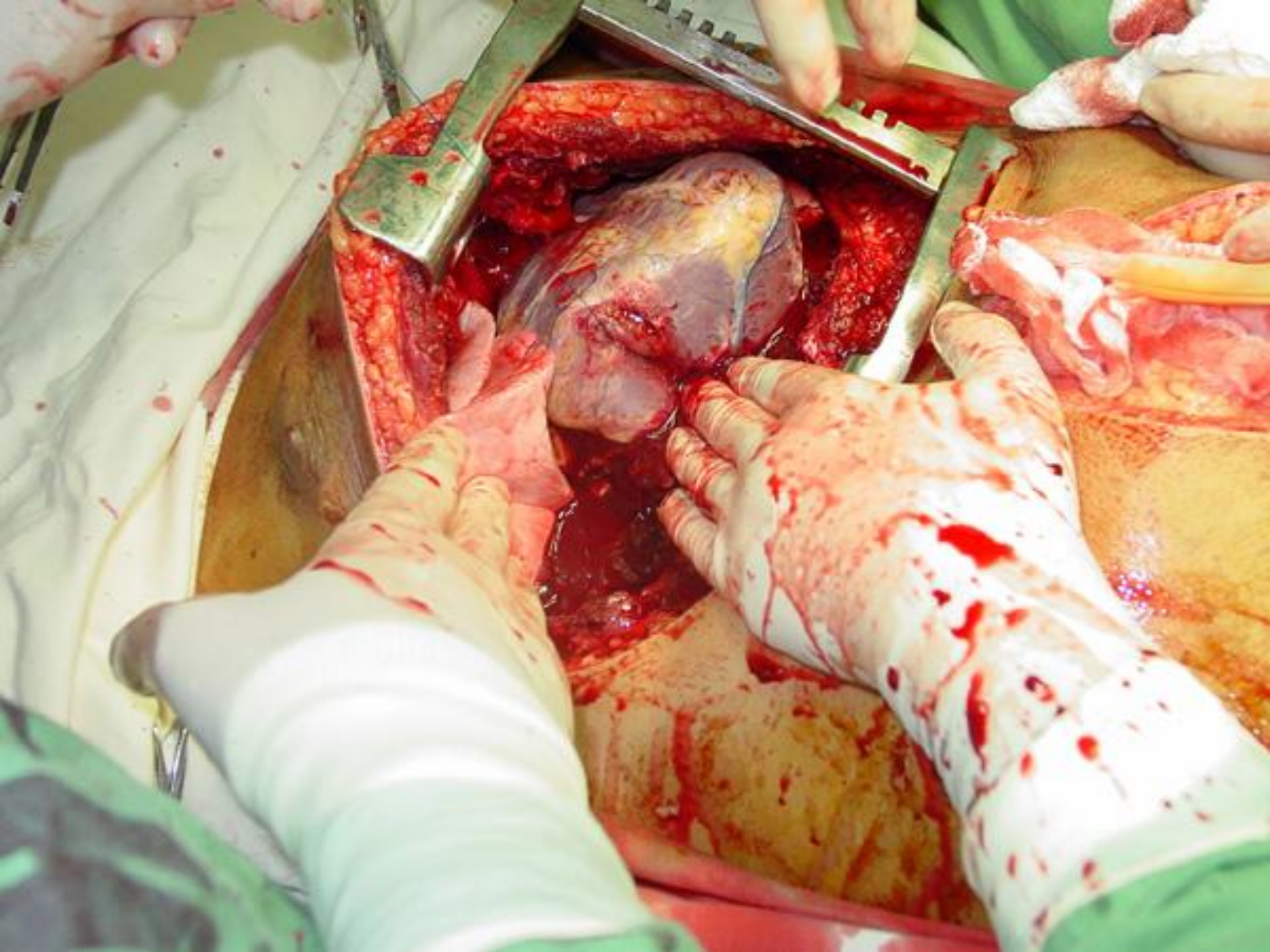
Professor of Trauma Sciences, QMUL

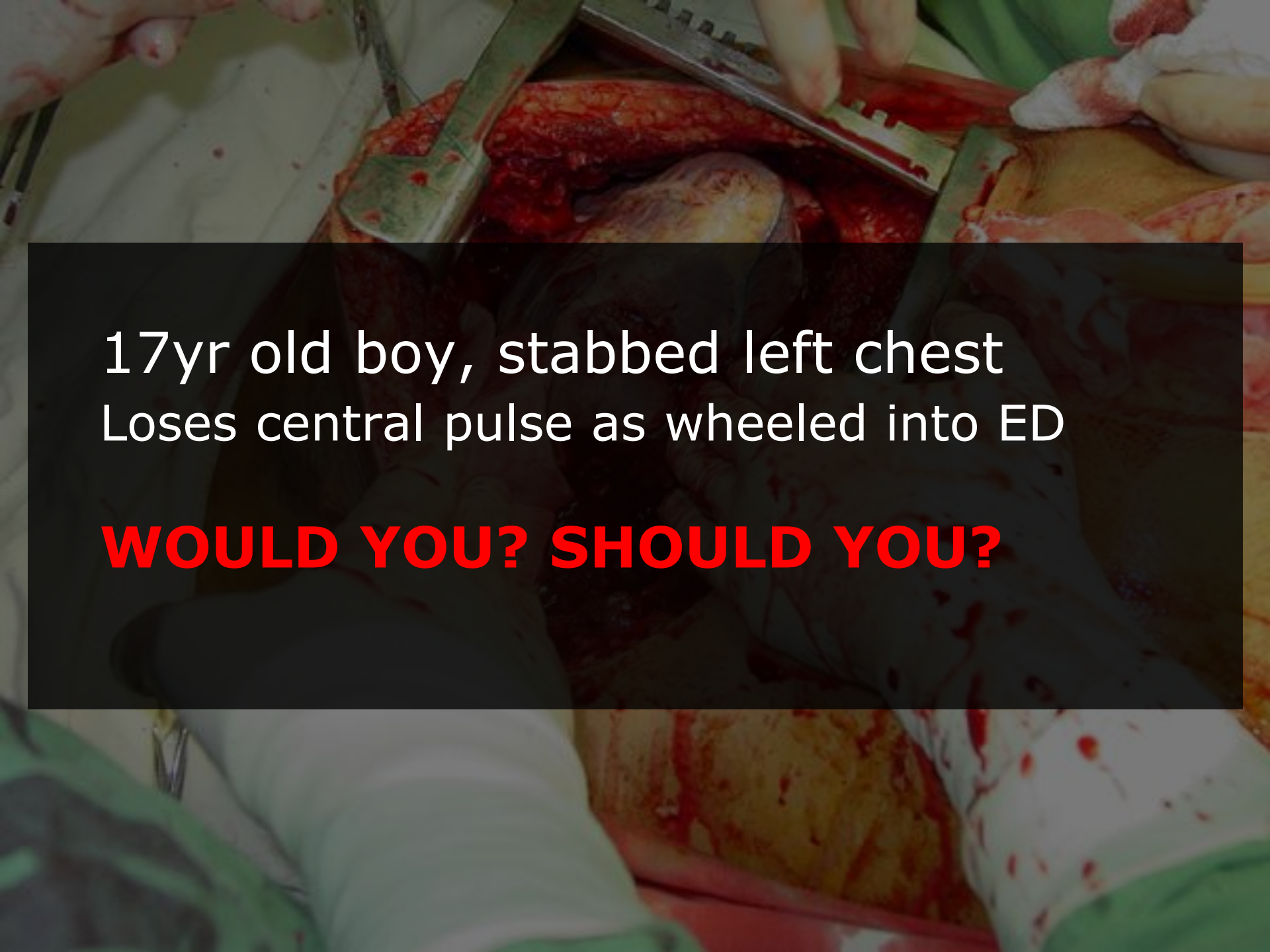
Clinical Director, London Major Trauma System



Queen Mary University of London
www.c4ts.qmul.ac.uk

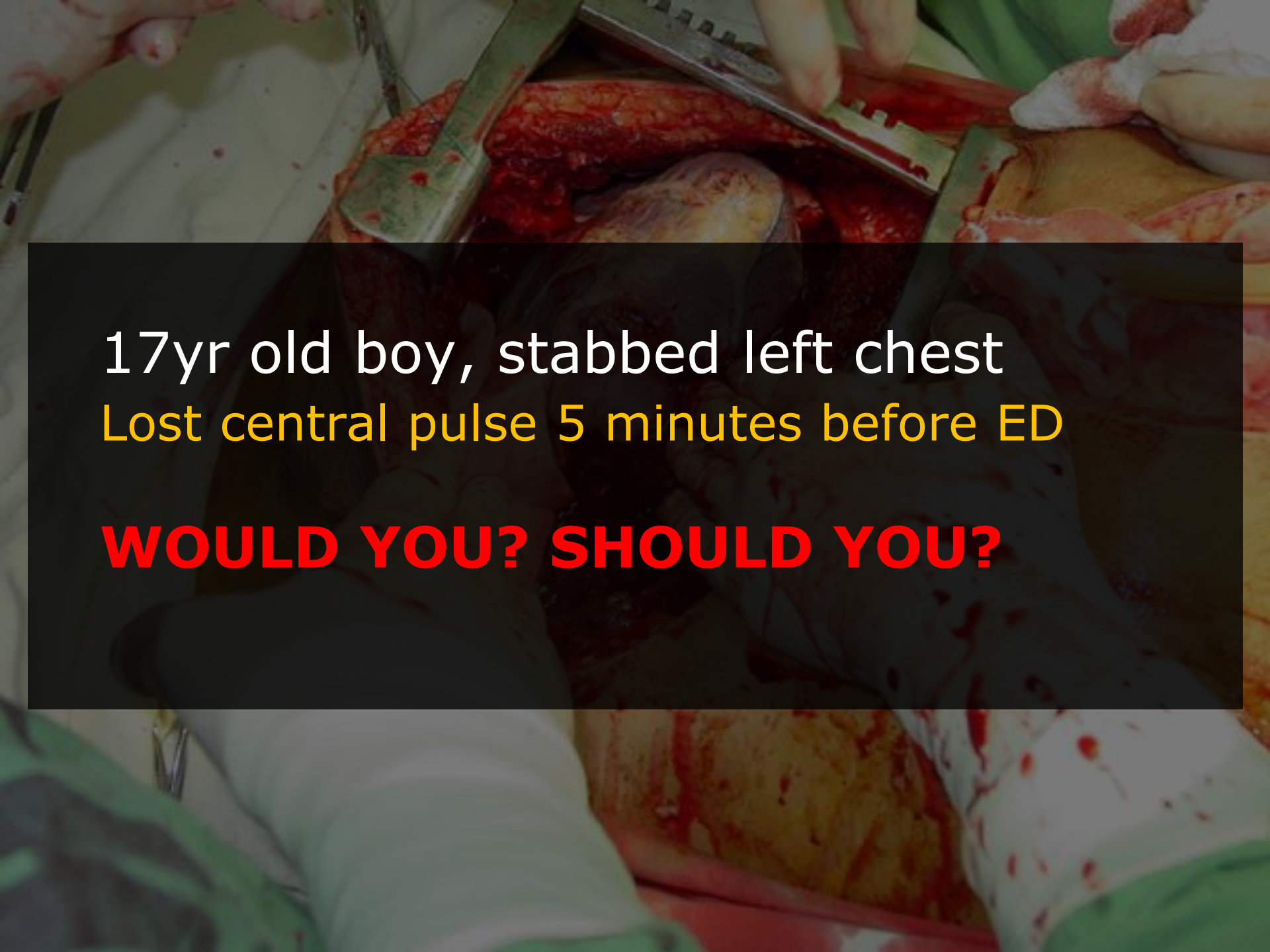
Royal London Major Trauma Centre
Barts Health NHS Trust





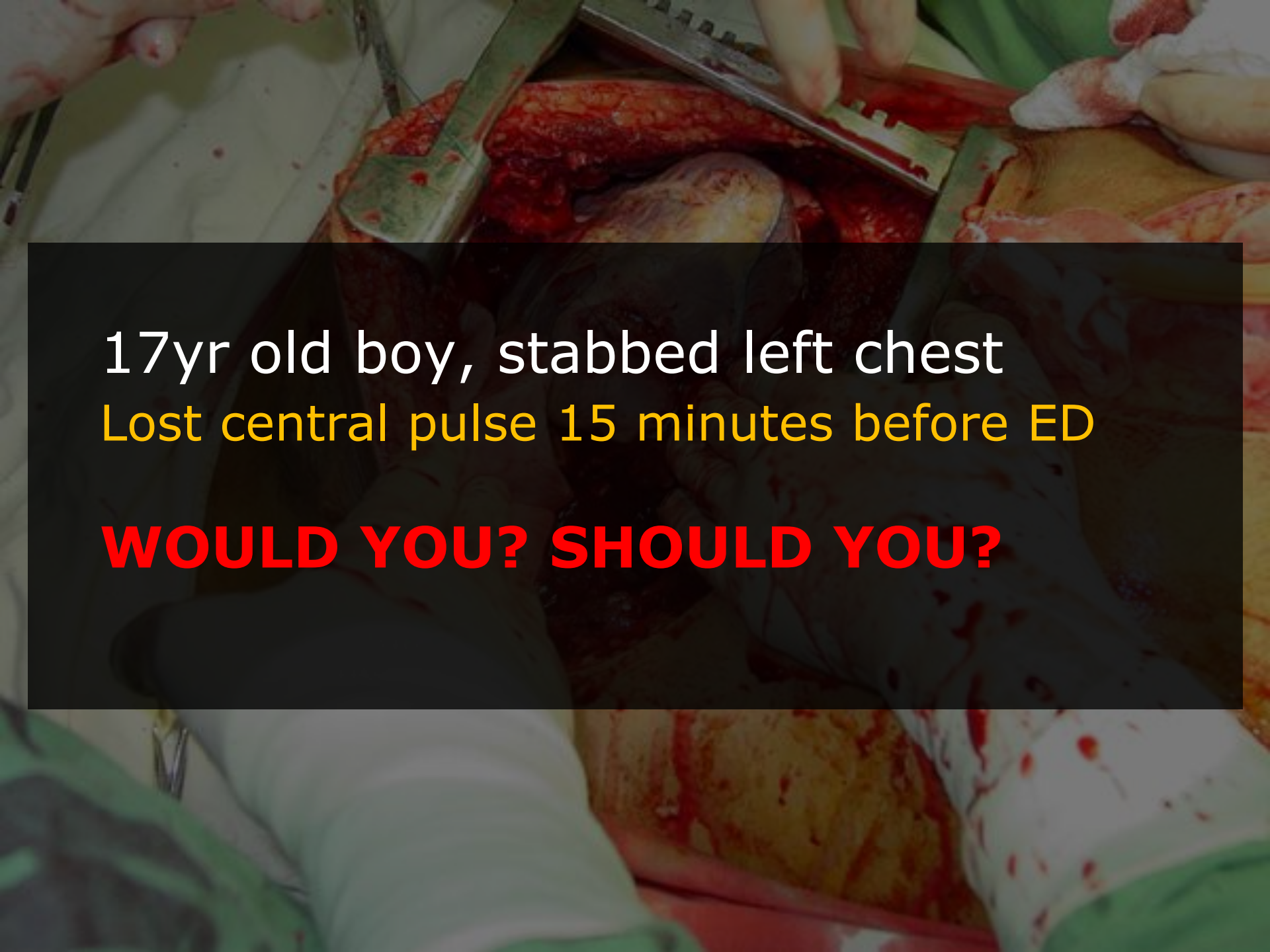
17yr old boy, stabbed left chest
Loses central pulse as wheeled into ED

WOULD YOU? SHOULD YOU?



17yr old boy, stabbed left chest
Lost central pulse 5 minutes before ED

WOULD YOU? SHOULD YOU?



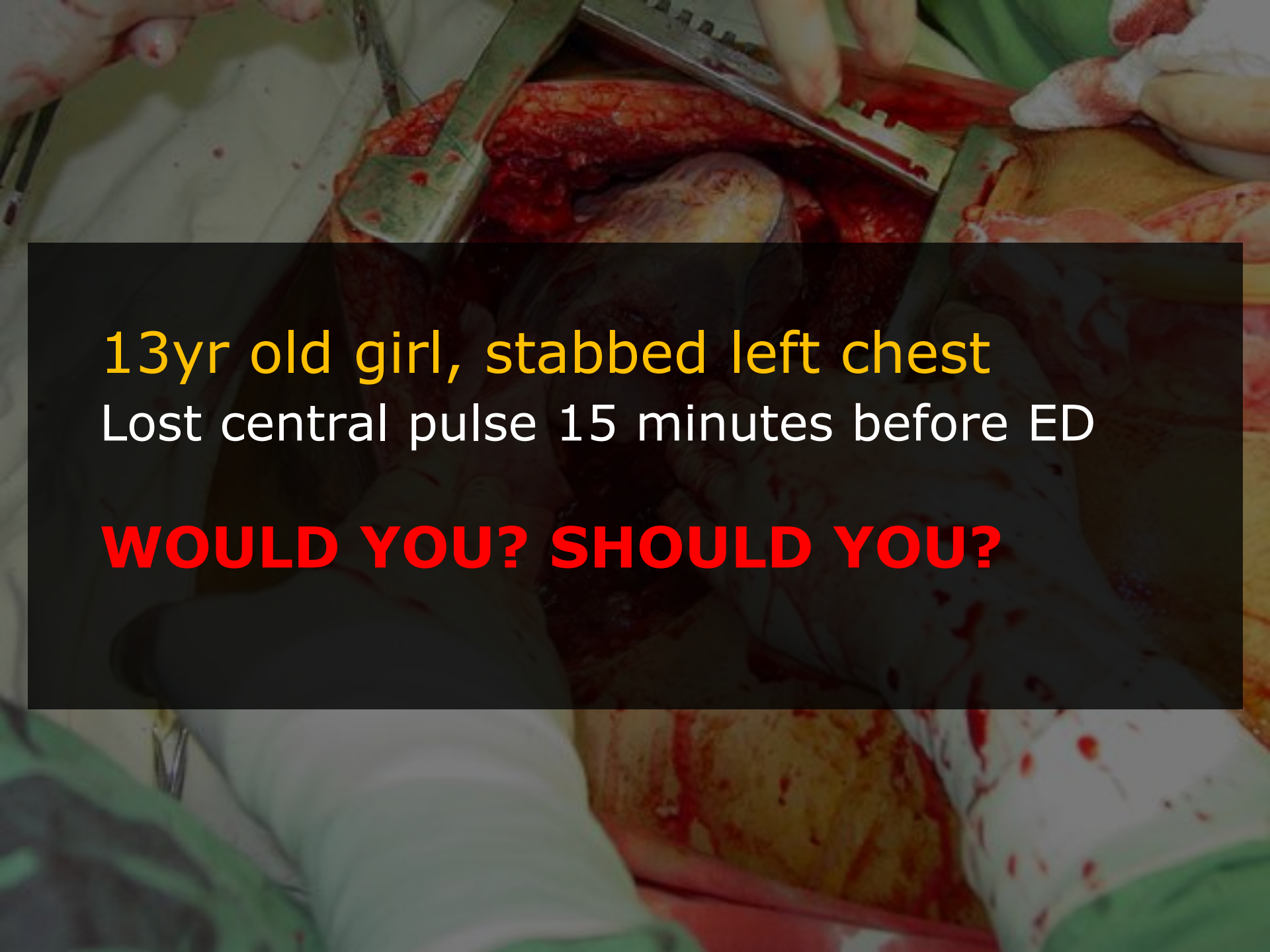
17yr old boy, stabbed left chest
Lost central pulse 15 minutes before ED

WOULD YOU? SHOULD YOU?



60yr old man, stabbed left chest
Lost central pulse 15 minutes before ED

WOULD YOU? SHOULD YOU?



13yr old girl, stabbed left chest
Lost central pulse 15 minutes before ED

WOULD YOU? SHOULD YOU?



13yr old girl, **bicycle hit by car**
Lost central pulse 15 minutes before ED

WOULD YOU? SHOULD YOU?

WHY WOULD YOU?

MIGHT SURVIVE

WHY WOULD YOU?

MIGHT SURVIVE

WHY WOULDN'T YOU?

MIGHT DIE

POOR OUTCOME

RISKS TEAM

SELF-GRATIFICATION ONLY

WHY WOULD YOU?

/100

MIGHT SURVIVE

8

WHY WOULDN'T YOU?

MIGHT DIE

92

POOR OUTCOME

RISKS TEAM

SELF-GRATIFICATION ONLY

WHY WOULD YOU?

/100

MIGHT SURVIVE – GOOD OUTCOME

6

WHY WOULDN'T YOU?

MIGHT DIE

92

POOR OUTCOME

2

RISKS TEAM

SELF-GRATIFICATION ONLY

WHY WOULD YOU?

/100

MIGHT SURVIVE – GOOD OUTCOME

6

MIGHT DONATE ORGANS

20

WHY WOULDN'T YOU?

MIGHT DIE & NOT DONATE

72

POOR OUTCOME

2

RISKS TEAM

SELF-GRATIFICATION ONLY

WHY WOULD YOU?

/100

MIGHT SURVIVE – GOOD OUTCOME

6

MIGHT DONATE ORGANS

20

WHY WOULDN'T YOU?

MIGHT DIE & NOT DONATE

72

POOR OUTCOME

2

RISKS TEAM

SELF-GRATIFICATION ONLY

WHY WOULD YOU?

MIGHT SURVIVE – GOOD OUTCOME

6

MIGHT DONATE ORGANS

20

WHY WOULDN'T YOU?

MIGHT DIE & NOT DONATE

72

POOR OUTCOME

2

RISKS TEAM

SELF-GRATIFICATION ONLY

WHY WOULD YOU?

/100

MIGHT SURVIVE – GOOD OUTCOME

6

MIGHT DONATE ORGANS

20

WHY WOULDN'T YOU?

MIGHT DIE & NOT DONATE

72

POOR OUTCOME

2

RISKS TEAM

SELF-GRATIFICATION ONLY

WHY WOULD YOU?

MIGHT SURVIVE 8%

MIGHT SURVIVE – GOOD OUTCOME 6%

17yr old boy, stabbed left chest 10%

Lost central pulse 15 minutes before ED

WHY WOULDN'T YOU?

WOULD YOU? SHOULD YOU?
MIGHT DIE & NOT DONATE 72%

POOR OUTCOME 2%

RISKS TEAM

SELF-GRATIFICATION ONLY

WHY WOULD YOU?

MIGHT SURVIVE 8%

MIGHT SURVIVE – GOOD OUTCOME 6%

MIGHT DIE & NOT DONATE 1%

60yr old man, stabbed left chest
Lost central pulse 15 minutes before ED

WHY WOULDN'T YOU?

WOULD YOU? SHOULD YOU?
MIGHT DIE & NOT DONATE 72%

POOR OUTCOME 2%

RISKS TEAM

SELF-GRATIFICATION ONLY

WHY WOULD YOU?

MIGHT SURVIVE 8%

MIGHT SURVIVE – GOOD OUTCOME 6%

MIGHT DIE & NOT DONATE 20%

13yr old girl, bicycle hit by car
Lost central pulse 15 minutes before ED

WHY WOULDN'T YOU?

WOULD YOU? SHOULD YOU?
MIGHT DIE & NOT DONATE 72%

POOR OUTCOME 2%

RISKS TEAM

SELF-GRATIFICATION ONLY

WHY WOULD YOU?

MIGHT SURVIVE	8%
MIGHT SURVIVE – GOOD OUTCOME	6%
MIGHT DONATE	20%

WHAT DO I DO?

WHY WOULDN'T YOU?

MIGHT DIE & NOT DONATE	72%
POOR OUTCOME	2%

RISKS TEAM

SELF-GRATIFICATION ONLY

WHY WOULD YOU?

MIGHT SURVIVE	8%
MIGHT SURVIVE – GOOD OUTCOME	6%
MIGHT DONATE	20%

WHAT DO I DO?

CAN WE FIX THIS?

WHY WOULDN'T YOU?	
MIGHT DIE & NOT DONATE	72%
POOR OUTCOME	2%

RISKS TEAM

SELF-GRATIFICATION ONLY

WHY WOULD YOU?

MIGHT SURVIVE	8%
MIGHT SURVIVE – GOOD OUTCOME	6%
MIGHT DONATE	20%

WHAT DO I DO?

IS THE HEART ALIVE?

WHY WOULDN'T YOU?

MIGHT DIE & NOT DONATE	72%
POOR OUTCOME	2%

RISKS TEAM

SELF-GRATIFICATION ONLY

WHY WOULD YOU?

MIGHT SURVIVE 8%

MIGHT SURVIVE – GOOD OUTCOME 6%

MIGHT DONATE 20%

WHAT DO I DO?

REMEMBER THE MULTIPLE

OPPORTUNITIES TO WITHDRAW

POOR OUTCOME 2%

RISKS TEAM

SELF-GRATIFICATION ONLY



The image is a composite graphic. The background is a photograph of a surgical procedure, showing a large incision in a patient's back with various surgical instruments and hands visible. The scene is brightly lit, and there is a significant amount of blood. Overlaid on this is a large, semi-transparent dark grey rectangle. Inside this rectangle, the text "IS IT WORTH IT...?" is written in a bold, white, sans-serif font, centered horizontally and vertically. The text is the primary focus of the graphic.

IS IT WORTH IT...?



IS IT WORTH IT...?

...THAT DEPENDS.